

Satu Bumi

Advanced Concrete Technology

Advanced Concrete Technology



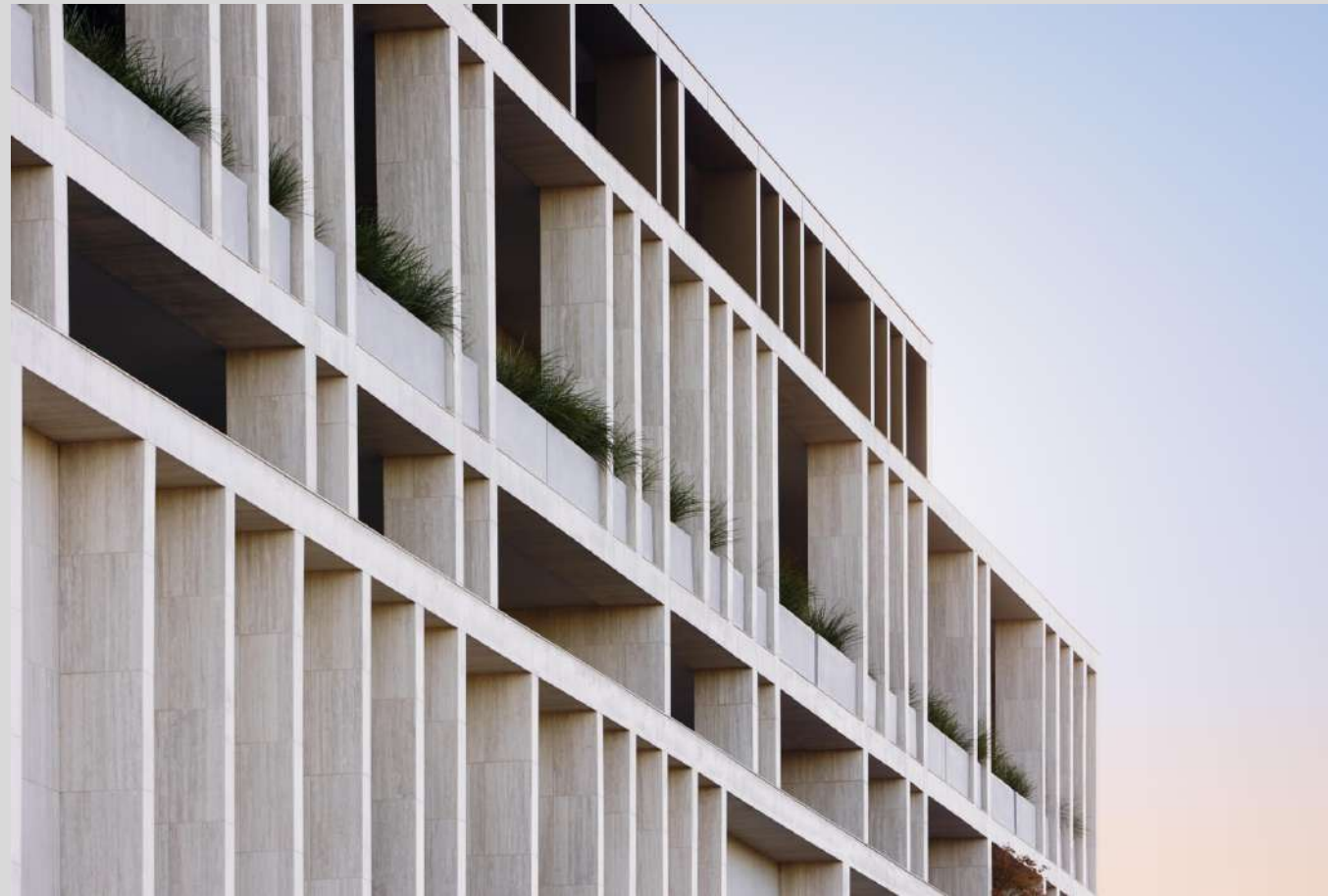
Project Profile

HALLMARK APARTMENTS

satubumi.com.au

Project Profile

HALLMARK APARTMENTS



Key Participants

Builder	Ironside - www.ironside.com.au
Architect	Fender Katsalidis - www.fkaustralia.com.au
Developer	Beulah International - www.beulahinternational.com.au
GRC Manufacturer	Satu Bumi - www.satubumi.com.au

Project Background

Hallmark has thirty-two architecturally designed luxury apartments spread over five levels in Melbourne's inner northeast suburb of Ivanhoe.

This project has an elegant and simple design that is influenced by both modernistic architecture in general and more specifically by the local sophisticated art deco architecture of the Ivanhoe neighbourhood.

Hallmark was built by Ironside and developed by Beulah International in conjunction with design architects Fender Katsalidis.

The project won the "2019 Development of the Year" in "The Urban Developer's Industry Excellence Awards".

Satu Bumi's Involvement

Satu Bumi was engaged by Ironside to manufacture and deliver around eighty custom GRC (Glass Fibre Reinforced Concrete) planters for this project.

All the planters were manufactured with high commercial grade GRC using Satu Bumi's CityScape technology with a natural concrete grey finish.

The installation of the planters was managed by Ironside which is a professional and progressive contemporary construction business specialising in multi residential apartment developments.

This project showcases the development vision of Beulah International, the architectural and design capabilities of Fender Katsalidis, and the construction management competence of Ironside.

Therefore, Satu Bumi was proud of its involvement in terms of the manufacture and supply of the custom GRC planters for the project.

Satu Bumi

Advanced Concrete Technology

HALLMARK APARTMENTS