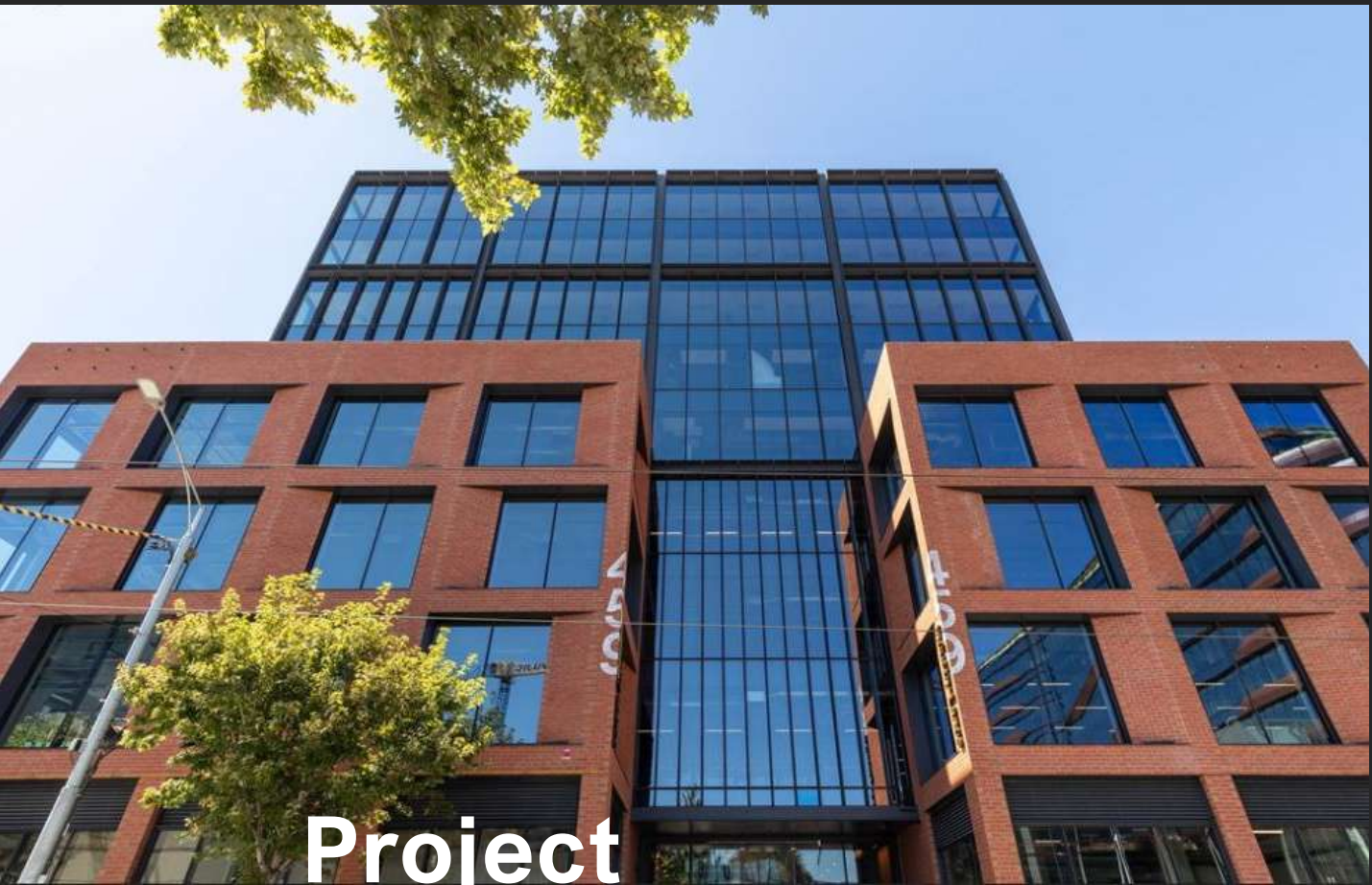


Satu Bumi

Advanced Concrete Technology

Advanced Concrete Technology



Project Profile

INDUSTRY LANES - MELBOURNE

satubumi.com.au

Project Profile

INDUSTRY LANES - MELBOURNE



Key Participants

Developers	Salter Properties - www.schiavello.com.au
Architect	Architectus Australia - www.architectus.com.au
Builder	Hansen Yuncken - www.hansenyuncken.com.au
Landscape Architect	Mala - www.mala.net.au
Landscaper	Living Landscapes - www.livinglandscape.com.au
GRC Manufacturer	Satu Bumi - www.satubumi.com.au

Project Background

Situated at 459-471 Church Street, Industry Lanes provides a new high-quality commercial office complex to Melbourne's Richmond-Cremorne precinct.

The development consists of three buildings in a creative, campus style development three kilometres from the Melbourne CBD and featuring a mix of large and small in-between spaces including retail, communal amenities, open air courtyards and shared work zones.

Industry Lanes was developed by Salta Properties and the Abacus Properties Group, architected by Architectus, which is one on Australia's largest architectural firms, and built by Hansen Yuncken.

By creating an internal village linked to existing street activity, the Industry Lanes commercial project's unique design aspires to a high level of wellbeing, connection, and amenity to its tenants.

Satu Bumi's Involvement

Based on a landscaping design by Mala Studios, Satu Bumi was engaged by Living Landscapes to manufacture and supply two-hundred and twenty-four GRC planters of various sizes and shapes ranging up to 450 kilograms in weight.

This was a highly bespoke landscaping project that showcased Satu Bumi's ability to manufacture a reasonably large number of custom-made GRC planters to suite the architectural design intent of seven levels of a high-quality commercial building complex. All the planters were manufactured with high commercial grade GRC (Glass Fibre Reinforced Concrete) using Satu Bumi's CityScape technology with charcoal pigmented concrete smooth finishes.

This project highlighted the competence of each of the key participants particularly Living Landscapes that provided the installation services for the planter elements of the landscaping project.

Therefore, Satu Bumi was proud of its involvement in terms of the manufacture and supply of the GRC planters for the project.

Satu Bumi

Advanced Concrete Technology

INDUSTRY LANES - MELBOURNE