

## PLANTER DESIGN OPTIONS

Concrete or GRC (Glass Fibre Reinforced Concrete) planter boxes are typically square or rectangle and come in a variety of heights, widths and depths. This flexibility enables them to be positioned together efficiently in a variety of different configurations to suit areas that require controlled vegetation such as balconies, roof tops, court yards and other open spaces. However, the appearance of these planter boxes does not necessarily need to always be square or rectangle. GRC is such an adaptable medium for making planter boxes that it can also be used to produce attractive and practical variations to these typical standard shapes.

Let's have a look at some of these alternatively shaped planter boxes, and a few optional accessories, to get an idea as to how they can potentially be adapted to suit the design intent of your landscaping projects.

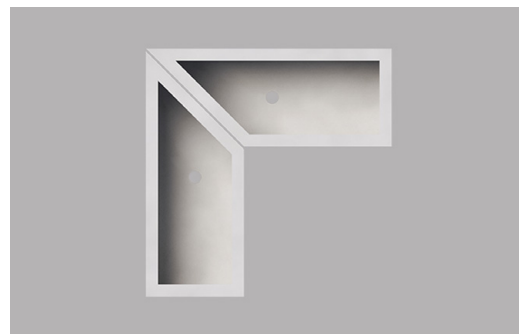
### ■ Corner Planter Options

#### **Mitred Corner Planters**

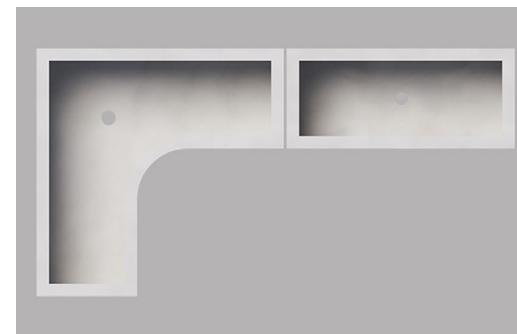
Mitred corners can be added to GRC planter boxes which provides more of a designer look than that attained by simply fitting a couple of standard rectangle planter boxes into a corner.

#### **L-Shaped Corner Planters**

Satu Bumi can also provide an L-shaped planter option to fit into corners. The two arms of the L-shaped planter do not have to be the same length. They can be made to form either an "L" or a "C" shape to suit the space intended and a curved inner edge to the "L" shape can also be added for a somewhat softer appearance.



**MITRED CORNER**



**L-SHAPED CORNER**

## Modified Planter Wall Heights

### Lowered Wall Planters

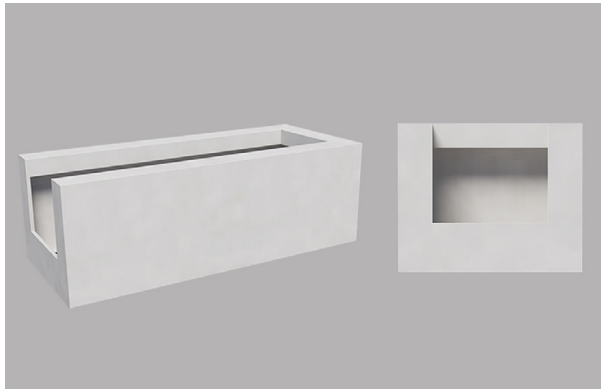
Satu Bumi can lower one or more of the walls of two rectangle planters. When they are abutted, sealed and filled with planting medium, they look like one continuous planter from a top view.

### Raised Wall Planters

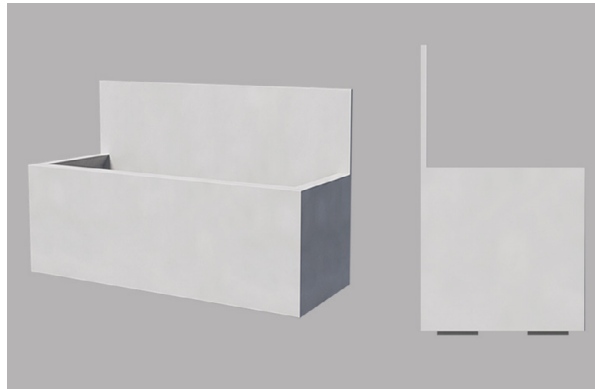
Planter boxes can provide a useful option as barriers or partitions. However, it may also be worthwhile considering the raising of one or more of the planter walls to provide an even more substantial barrier.

### Added Facias

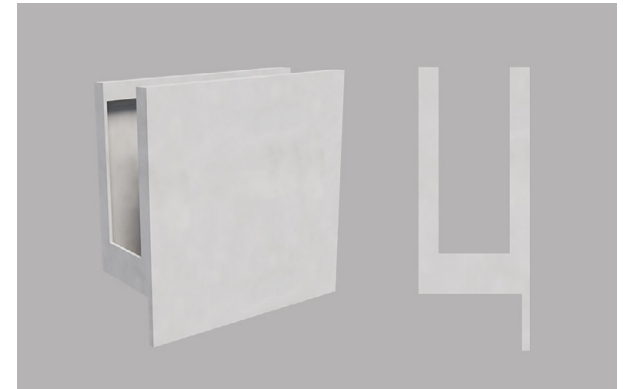
Planter boxes can provide a useful option as barriers or partitions. However, it may also be worthwhile considering the raising of one or more of the planter walls to provide an even more substantial barrier.



LOWERED WALL



RAISED WALL



ADDED FACIAS

## Curved Edge Planters

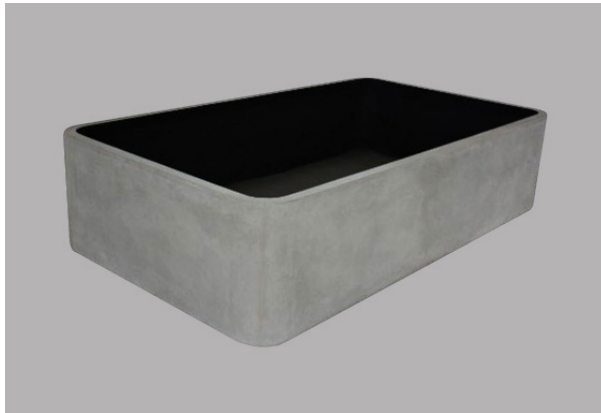
A variety of curved edge planters are part of Satu Bumi's standard planters' range. These planters are a derivation of the typical rectangle and cube planters with the addition of stylishly curved side edges. Also, from a practical perspective, the curved edges of these planters are less likely to chip whilst providing an additional degree of safety against sharp edges and corners in public spaces.

## H - Planters

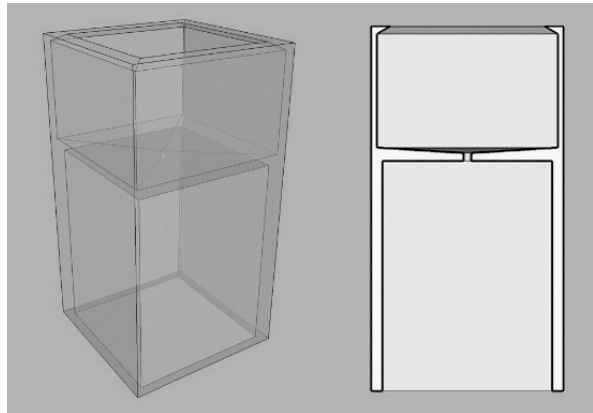
H-Planters are another form of Satu Bumi's standard range of planter shapes. These planters are useful on balconies where the planters must be tall to satisfy balcony height requirements but only need a small amount of planting depth.

## Curved Planters

Planter boxes don't need to have straight walls. Since Satu Bumi is a manufacturer that specialises in custom planters, any curves required in a planter can be specified at shop drawings stage and manufactured to order.



**CURVED EDGE**



**H - PLANTER**



**CURVED PLANTERS**

## Drainage Risers

Satu Bumi's drainage risers are an excellent option for controlling water drainage from planters. Satu Bumi's drainage risers are made of stainless steel and will not rust or degrade during the life of the planter.

## Highlighting Strip Lights

A bottom edge can be designed into a GRC planter that will enable the addition of a row of strip lights that are very impressive at night.



**DRAINAGE RISER**



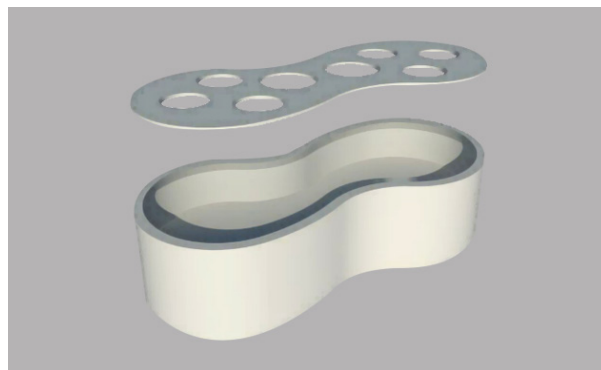
**HIGHLIGHT STRIP LIGHTS**

### ■ **Pot Planter Holders**

Pot planter holders can be designed to fit into any shaped GRC planter to hold plastic plant tubs that are then surrounded with mulch. This design enables plant maintenance companies to easily swap out and replace dormant or damaged plants.

### ■ **Planter Wheels**

Where GRC planters are expected to be moved relatively often after their initial installation, Satu Bumi can provide the option to add wheels to the bottom of planters.



**POT PLANTER HOLDER**



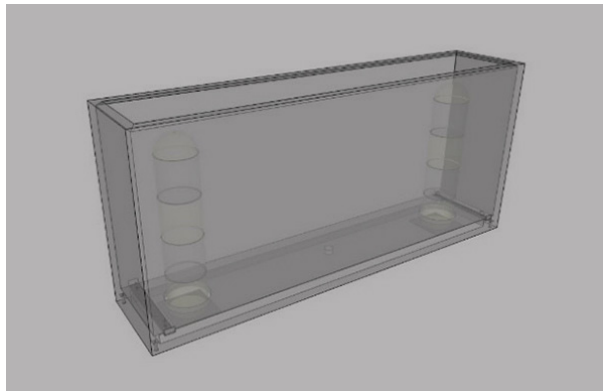
**PLANTER WHEELS**

## Hidden Security Planters

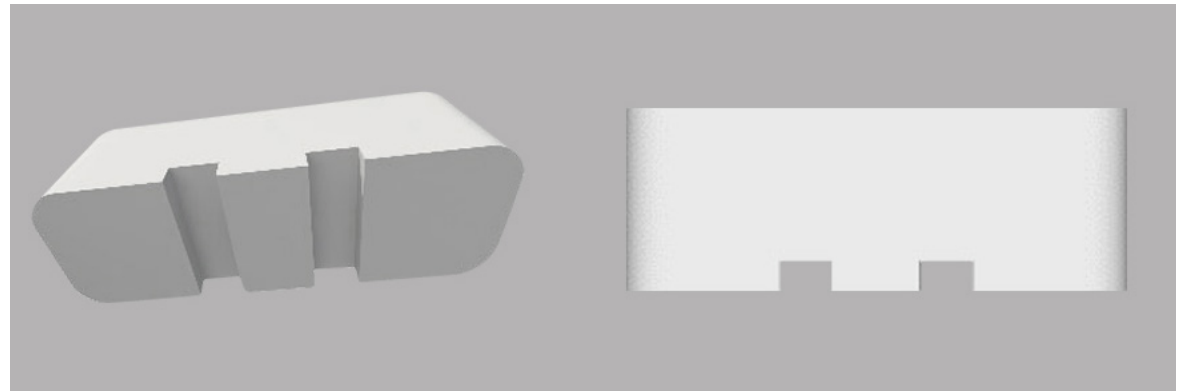
Security in public spaces is an on-going concern. Satu Bumi offers an option for using GRC planters to cover security bollards to make them more aesthetically pleasing.

## Forklift - Tyne Holes

Where GRC planters are large and heavy, Satu Bumi can provide the option of adding forklifttyne holes to the bottom of the planters. Heavy duty steel inserts can also be provided if required.



**HIDDEN SECURITY**



**FORKLIFT - TYNE HOLES**

## Planter Drip Trays

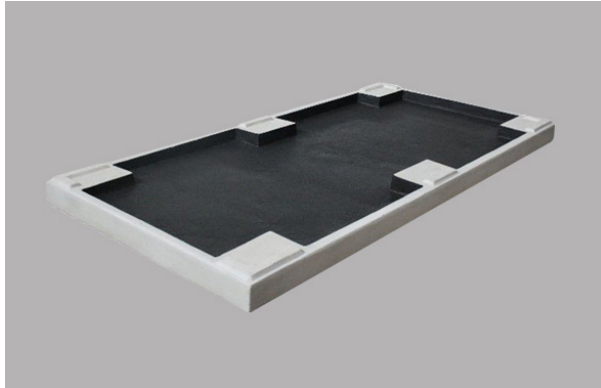
There are circumstances where planters need to sit in relatively open public spaces without access to direct drainage. In these circumstances, consideration could be given to the addition of drip trays that do not reduce the aesthetic appeal of the planters themselves.

## Lifting Lugs

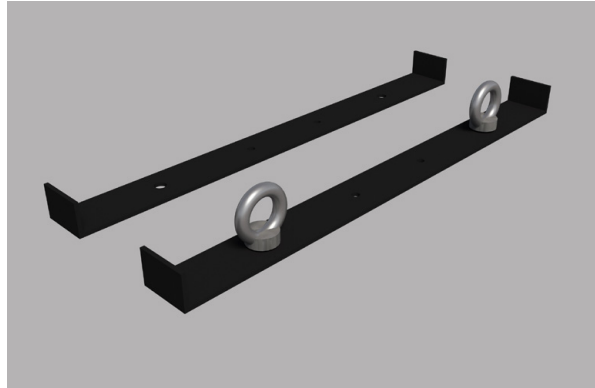
Lifting lugs can be added during manufacture and can be valuable during the installation process of larger GRC planters.

## Ferrules

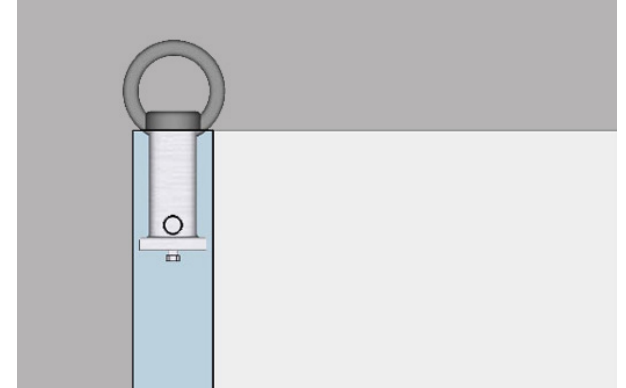
The addition of ferrules can be useful for securing GRC planters to wall brackets or for fixing points for hanging planters.



**DRIP TRAYS**



**LIFTING LUGS**



**FERRULES**

The main message from this information sheet is that you have options when it comes to GRC planter boxes. Therefore, you do not necessarily need to take what is on offer off the shelf in standard shapes and sizes or options. Satu Bumi is a large manufacture of GRC planter boxes and as the manufacturer we can provide a variety of options in GRC planter box design that may not be readily available from other sources in the market.

If you are looking for advice on this topic let us know by email at [sales@satubumi.com.au](mailto:sales@satubumi.com.au) or by calling our sales line on +61(03) 52921001

sales@satubumi.com.au  
+61 (03) 5292 1001  
satubumi.com.au

Last edited: 9th of May, 2023